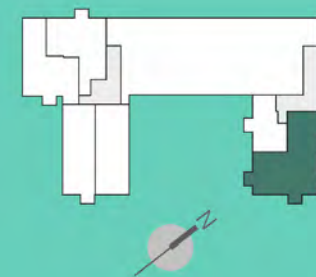




WESTPARK quartier



WHG 11 2. Obergeschoss

| | |
|--------------------|----------------------|
| Wohnen/Küche/Essen | 60,10 m ² |
| Schlafen | 16,20 m ² |
| Kind | 10,90 m ² |
| Flur 1 | 7,28 m ² |
| Flur 2 | 3,38 m ² |
| Bad 1 | 4,67 m ² |
| Bad 2 | 2,16 m ² |
| WC | 2,28 m ² |
| Balkon 50% | 1,88 m ² |
| Balkon 50% | 1,88 m ² |
| Balkon 50% | 1,88 m ² |
| Balkon 50% | 1,88 m ² |
| Balkon 50% | 1,88 m ² |

Gesamt 116,37 m²